



### WHO WE ARE

**Providing trusted counsel and advisory support to the world's leading aviation and aerospace companies, investors and other industry participants,** Alton Aviation Consultancy is recognized globally for its deep domain expertise, client-first approach, and experience-driven insight.

Over the past three decades, Alton's professionals have played key roles in steering the major developments that have shaped the future of the aviation industry.

### WHAT WE DO

**Founded by veteran aviation industry executives with decades of experience,** we ensure our valued clients are armed with data-driven, fact-based guidance required to inform their business decisions, allocate capital, prioritize resources, and manage risk.

### WHERE YOU CAN FIND US

**With offices in New York, Dublin, Beijing, Hong Kong, Tokyo and Singapore,** Alton provides a diverse client base with a global perspective and regional expertise.

### MEDIA RELATIONS

**Alton can provide expert analysis and commentary on key trends and concerns for the aviation industry.** Our team is available for in-person interviews and video calls for all print, online, and broadcast media, across all time zones.

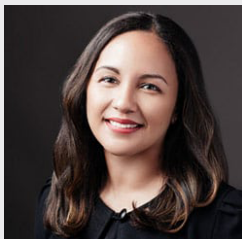
**For press enquiries, please email [alton@8020comms.com](mailto:alton@8020comms.com).**

### INDUSTRY EXPERTISE

Key industry sectors include the following:

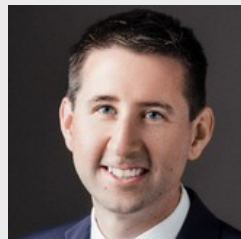
- ▶ *Aircraft Leasing and Financial Advisory*
- ▶ *Airlines*
- ▶ *Aviation and Aerospace Investors*
- ▶ *Maintenance, Repair and Overhaul (MRO) and Aftermarket*
- ▶ *Business and General Aviation, and Rotary Wing*
- ▶ *Aerospace Manufacturers and Suppliers*
- ▶ *Airports*

### PROFILES <https://altonaviation.com/team>



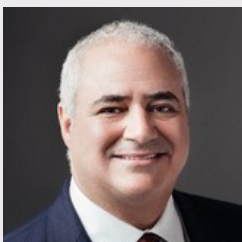
**Laetitia Achille**  
Managing Director

Laetitia brings 15 years of aviation experience to clients in aircraft leasing and financing, from our New York Office. Senior decision makers count on Laetitia for complex analytic support, objective business advice, and independent counsel that delivers durable, lasting value.



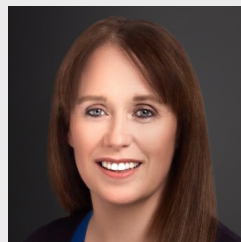
**John Mowry**  
Managing Director

Based in our New York office, John brings his deep domain expertise and objective counsel to operators, lessors, and equity and debt investors, complemented by nearly two decades of aviation industry experience and more than 15 years in advisory and consulting services.



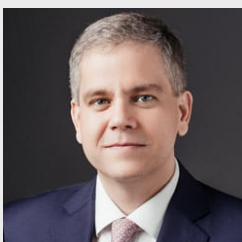
**Jonathan Berger**  
Managing Director

Jonathan specializes in strategic planning, market analysis, and operational improvement in the aerospace and MRO segments. Based in New York, Jonathan has been delivering pragmatic, bottom line value to aviation clients for more than 28 years.



**Leah Ryan**  
Managing Director

Leading our Dublin office, Leah brings clients deep market and financial/risk expertise informed by nearly two decades with the world's largest aircraft leasing company. Leah's global client base extends across lessors, investors, lenders, and airlines.



**Adam Cowburn**  
Managing Director

Adam leads the Asia-Pacific team, specializing in performing complex quantitative financial analysis to minimize risk for stakeholders. Adam's engagements typically involve strategic and business planning, new business development, and mergers and acquisitions for a range of service providers.

### STYLE GUIDE

- ▶ In the first reference, the full name of the company is preferred: **"Alton Aviation Consultancy"**
- ▶ For any subsequent references, the shortened name 'Alton' is encouraged.